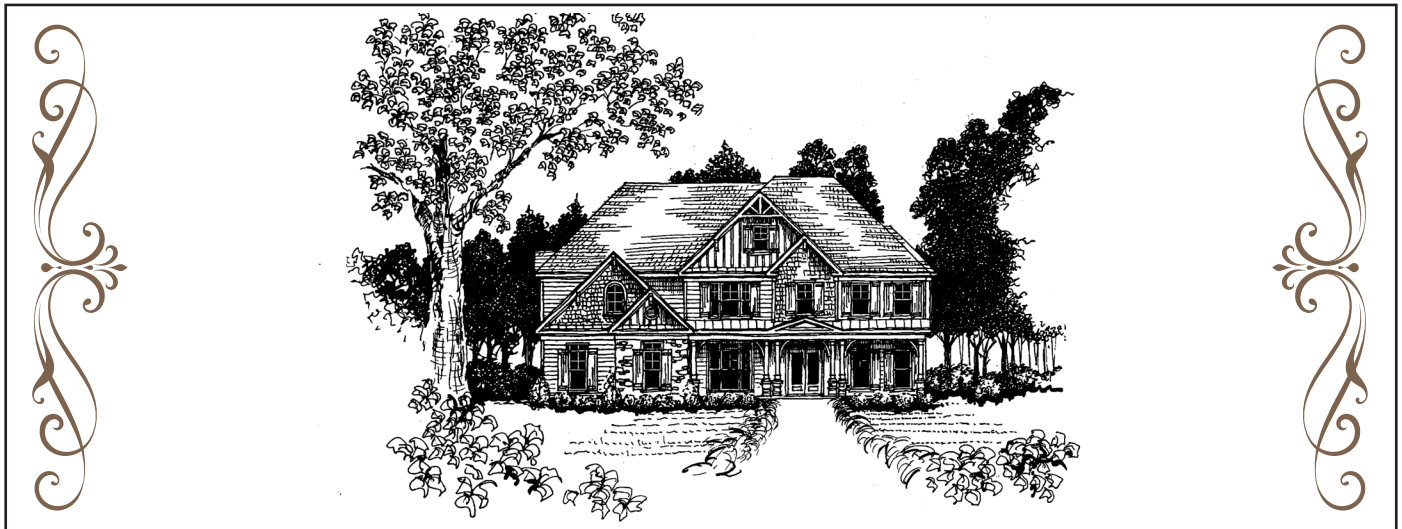


THE GATES
PEACHTREE CITY
 Distinctive New Homes

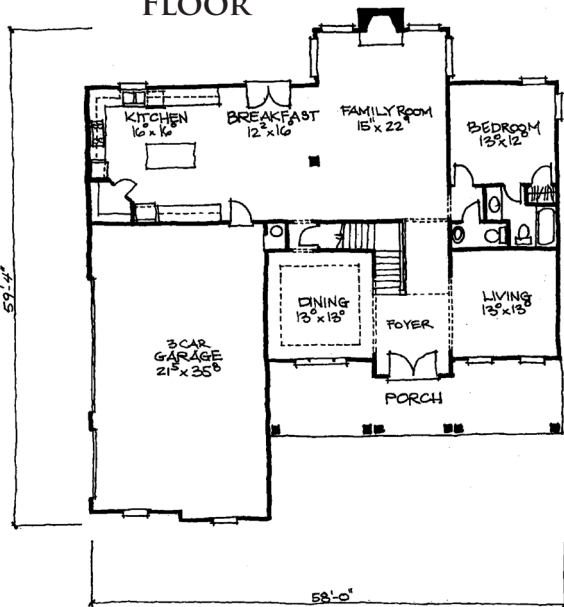


WILLOW RIDGE
 Offered Exclusively by
 Chadwick Homes, Inc.

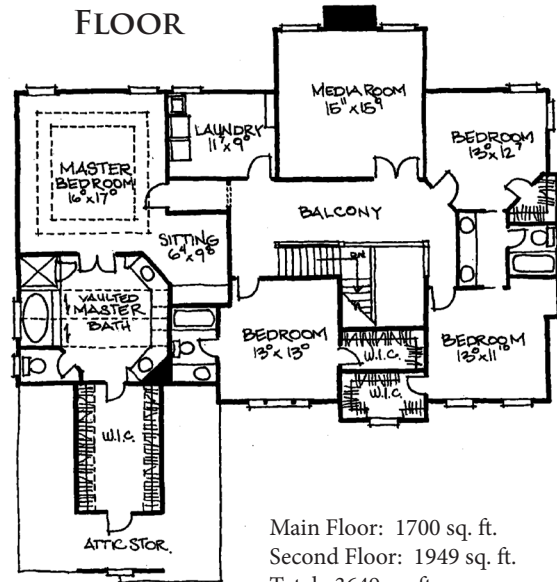


*Elevations and floor plans are artist renderings. Floor plan dimensions are approximate. Consult working drawings for actual dimensions. All information, including plans and pricing, as well as all representations, are believed to be accurate but are not warranted. All are subject to change without notice as well as errors or omissions. Photographs are representative only

MAIN FLOOR



SECOND FLOOR



Main Floor: 1700 sq. ft.
 Second Floor: 1949 sq. ft.
 Total: 3649 sq. ft.

Gail McFarling, Assoc. Broker
 678-300-4776
 gail.mcfarling@bhhsgeorgia.com
 www.thegates.bhhsgeorgia.com



BERKSHIRE HATHAWAY
 HomeServices
 Georgia Properties

770-487-8300

Elaine White, Realtor®
 770-616-4483
 elaine.white@bhhsgeorgia.com
 www.thegates.bhhsgeorgia.com